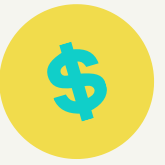
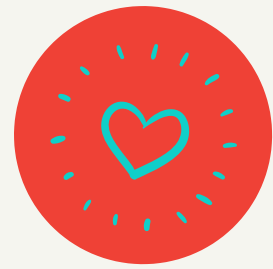


Waldo Community Improvement District



2020 ANNUAL REPORT

In 2009, the Waldo Community Improvement District (CID) was formed to provide a source of funding for the ongoing maintenance and beautification of the area. The Waldo CID's boundaries are generally commercial areas on Gregory Boulevard between Oak Street and Wornall, and on Wornall Road between Gregory Blvd and 85th Street. Areas of service include landscaping, security officers, litter and graffiti abatement, marketing and promotion of the CID.

SERVING AS CHAMPIONS OF OUR COMMUNITY WHILE PRESERVING AND ADVANCING OUR VIBRANT INCLUSIVE CULTURE.

Waldo Area Business Association



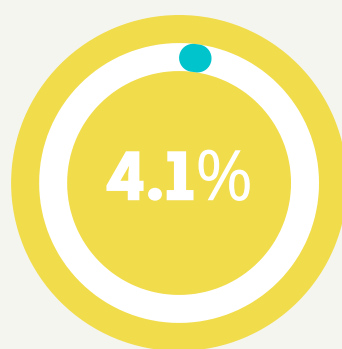
Waldo CID Income 2020



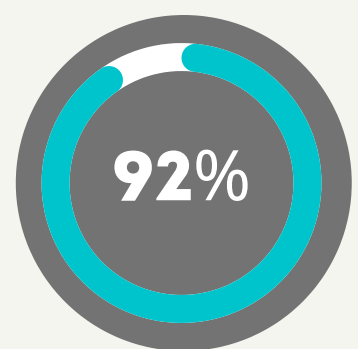
INTEREST



PROMOTIONS



SPECIAL ASSESSMENTS



SALES TAX REVENUE

WaldoKC.org

Info@WaldoKC.org

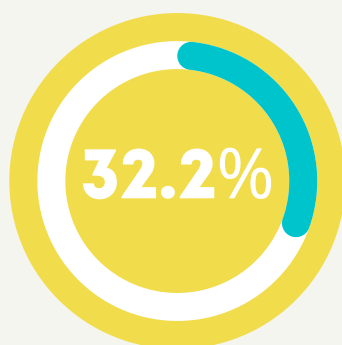
Waldo CID Expense 2020



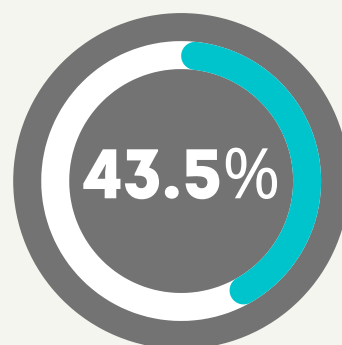
PROPERTY



PROMOTIONS



ADMINISTRATIVE/ GENERAL OFFICE



SERVICES